

# Südsee-Expedition: Trauminseln im Südpazifik

Reisetermin

06.05. - 20.05.2025

Reederei

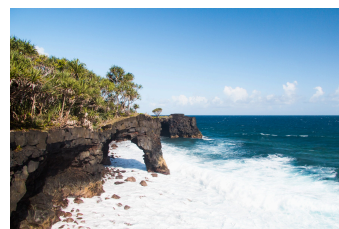
Silversea

Schiff

Silver Cloud

Reisecode

E4250506014



Door-to-DoorDoor-to-Door

**Vista Suite**

Doppelbelegung



**€ 12.800**  
pro Person

Einzelbelegung



**€ 16.000**  
pro Person



Door-to-DoorDoor-to-Door

### Veranda Suite

Doppelbelegung



€ 12.800  
pro Person

Einzelbelegung



€ 16.000  
pro Person



Door-to-DoorDoor-to-Door

### Deluxe Veranda Suite

Doppelbelegung

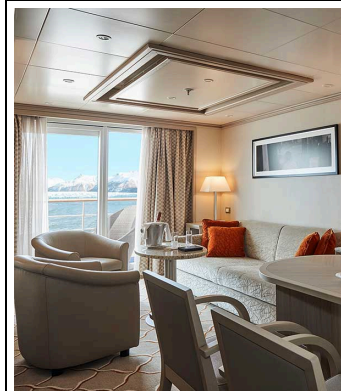


€ 17.100  
pro Person

Einzelbelegung



€ 21.380  
pro Person



Door-to-DoorDoor-to-Door

### Medallion Suite

Doppelbelegung

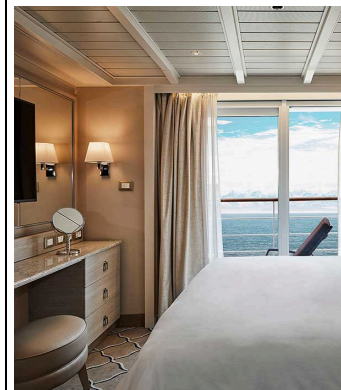


€ 26.800  
pro Person

Einzelbelegung



€ 53.600  
pro Person



Door-to-DoorDoor-to-Door

### Silver Suite

Doppelbelegung










€ 28.100  
pro Person

Einzelbelegung



€ 56.200  
pro Person

	Door-to-DoorDoor-to-Door <b>Royal Suite</b>	
	Doppelbelegung	 <b>€ 30.900</b> pro Person
	Door-to-DoorDoor-to-Door <b>Grand Suite</b>	
	Doppelbelegung	 <b>€ 34.000</b> pro Person
	Door-to-DoorDoor-to-Door <b>Owner's Suite</b>	
	Doppelbelegung	 <b>€ 37.400</b> pro Person
	Einzelbelegung	 <b>€ 74.800</b> pro Person





Lautoka  
Di., 6. Mai  
Ankunft 00:00

Tag 1

It doesn't get much sweeter than arriving on the sun-soaked shores of the Sugar City. Fiji's second-biggest settlement opens up a world of blissful beaches and turquoise seascapes while its dense jungle lures the adventurous deep into its embrace. Experience rich Fijian life and see dramatic displays like warrior dances and remarkable local practices like firewalks which kick up burning embers into the night's sky. Legend says the city took its name after two chiefs faced each other in a duel. A spear pierced one of the chiefs leading to the shout of 'lau-toka!' or 'spear hit!' Sugar is Lautoka's main trade but its botanical gardens are a sweet insight into the tropical plant life that thrives here - from pearl white lilies to tall fragrant orchids. Explore temples charming cafes and mills - or barter for some of the juiciest mangoes you'll ever taste at the city's lively market. You'll only be able to resist the beaches for so long and it doesn't get much more stunning than the Blue Lagoon - a heavenly blend of woven together turquoise shades. Remote wild and unspoiled these are some of the best tropical beaches in the world. There's more rejuvenating relaxation at the mineral-rich mud pools and spas fuelled by the volcanic activity below. Savala Island is a teardrop of sand offshore and another beautiful place to wander with the soft powder between your toes - along sandy spits that peter out into the water. Or swim and snorkel among its envied reefs thronging with fish life.

Day at sea  
Mi., 7. Mai  
Ankunft 00:00

Tag 2

Days at sea are the perfect opportunity to relax unwind and catch up with what you've been meaning to do. So whether that is going to the gym, visiting the spa, whale watching, catching up on your reading or simply topping up your tan these blue sea days are the perfect balance to busy days spent exploring shore side.

Rotuma  
Do., 8. Mai  
Ankunft 07:30

Tag 3

Jutting sharply from blissful turquoise waters, almost 400 miles north of Fiji, beautiful Rotuma rises like a verdant green fin from the sea. This remote island group is a true tropical paradise, resplendent with chalky blue waters, dense jungle, and romantic arcs of heavenly white sands. Experiencing minimal tourism, visiting these islands is a rare privilege and a chance to explore 20 square miles of wild, tropical landscapes, where beaches beg to be strolled and trees bend under the weight of juicy mangos and pineapples. Feast on local dishes made from taro root and refresh with swigs from sweet coconuts on this island, which brims with natural resources. Embark on mountain hikes or seek out snorkelling above thriving coral reefs. In this protected bird area, you might also see plenty of fluttering in the leaves and hear the lilt of protected birds like the Polynesian triller. The hospitable locals, known as the Rotumans, are descended from settlers from Tahiti, and their traditions bear more similarities to Polynesian culture than to typical Fijian culture. Approximately 2,000 continue to live here in Rotuma, while 10,000 descendants have found their home on Fiji's main island.

Day at sea  
Fr., 9. Mai  
Ankunft 00:00

Tag 4

Days at sea are the perfect opportunity to relax unwind and catch up with what you've been meaning to do. So whether that is going to the gym, visiting the spa, whale watching, catching up on your reading or simply topping up your tan these blue sea days are the perfect balance to busy days spent exploring shore side.

Funafuti  
Sa., 10. Mai  
Ankunft 07:30

Tag 5

Nukufetau  
So., 11. Mai  
Ankunft 07:30

Tag 6

Barely registering on the map, only the committed travel far enough to seek out Nukufetau's far-flung drop of loveliness, which is as refreshing and rejuvenating a place as you will ever find. This tranquil, bell-shaped atoll - where gentle waves unfold and rustling palm trees are the only distractions - invites you into a real-life desert island daydream in full technicolour. With only around 500 people inhabiting this attractive atoll, it is one of the least populated in the distant nation of Tuvalu, and this unspoiled island receives just a handful of annual visitors. Visit to be immersed in turquoise waters, deserted beaches, and shallow lagoons, forming seascapes of astonishing natural beauty. Remnants from World War II, including runways now reclaimed by the thick grasp of nature, linger among the coconut plantations. As you might expect, exceptional snorkelling opportunities await this far out into the remote waters of the South Pacific. You might experience colourful encounters with tropical fish, turtles, and even octopuses dancing below as you swim through the beautiful waters.

Day at sea  
Mo., 12. Mai  
Ankunft 00:00

Tag 7

Days at sea are the perfect opportunity to relax unwind and catch up with what you've been meaning to do. So whether that is going to the gym, visiting the spa, whale watching, catching up on your reading or simply topping up your tan these blue sea days are the perfect balance to busy days spent exploring shore side.

Mata-Utu, Wallis Island  
Di., 13. Mai  
Ankunft 08:00

Tag 8

Mata'utu, known for its stunning coral reefs, is a protectorate of France and lies between beautiful Tahiti and Noumea. It is the largest urban center of Wallis Island, also locally called Uvea. The downtown area is recognised for its Cathedral, a French national monument next to the very modest "Palace of the King of Uvea." In former times the different groups on Uvea built several forts to defend themselves against aggressors from the island or from abroad. The largest of these, the Kolonui Fort, has been partially excavated and restored.

Asau  
Mi., 14. Mai  
Ankunft 12:00

Tag 9

Apia  
Do., 15. Mai  
Ankunft 07:30

Tag 10

As the first independent state of Polynesia, Samoa is considered the cradle of the nation, a place where the Earth and the heart seamlessly fuse together. Incidentally, were one to translate the word "Samoa" into the traditional Polynesia dialect, they would find that the words "Sa" and "Moa" mean exactly that: earth and centre. Apia, Samoa's only town, is found central north coast of Upolu, Samoa's second largest island. Originally a tiny village of just over 300 inhabitants (c. 1800), the town's population has grown to be just shy of 40,000. While a population of such size might mean forgetting traditional roots in favour of modern life, this has not been the case (too much) in Apia. The Samoan way of life is still very much the order of the day; traditional open-sided houses with thatched roofs on platforms of coral or concrete, also known as 'fales', can be seen everywhere and nearly all of the population (including the policemen) wear the typical local dress; skirts, or 'lavalavas' for men, and long, mumu-style dresses for women. The markets are bursting with culture and colour, selling everything from handicrafts to cuisine and local produce. If the idyllic setting of aquamarine pools of bluey green water, framed by low fringed palms and huge umbrella trees seems familiar, that's because it probably is. The island, and notably the southern resort of Lefaga, was used in the 1953 Gary Cooper classic Return to Paradise Beach. It is also the last place on Earth to see each day's sunset.

Niuatoputapu  
Fr., 16. Mai  
Ankunft 12:30

Tag 11

Also referred to as Keppel Island, Niuatoputapu (meaning "Very Sacred Coconut" in the local language) is one of the northernmost islands of Tonga, located in the southwestern Pacific Ocean. The highest point of the island is a hill just 515 feet (157 meters) in height, the eroded remnant of a large volcano that erupted approximately 3 million years ago. The island consists of three primary villages with a total population of just over 900 inhabitants. The original Niuatoputapu language has been extinct for centuries; residents now speak Tongan. This island is beginning to recover from a 2009 tsunami triggered by a 8.3 magnitude earthquake. Niuatoputapu is surrounded by a large reef and boasts beautiful white beaches and clear turquoise waters perfect for indulging yourself.

Neiafu, Vava'u Group  
Sa., 17. Mai  
Ankunft 07:30

Tag 12

With a population of 6 000 Neiafu is the capital of the Vava'u Group and the second largest municipality in the Polynesian nation of Tonga (a 169-island archipelago in the South Pacific). The city is situated next to a deep- water harbor (Port of Refuge) on the south coast of Vava'u the main island of the Vava'u archipelago in northern Tonga. The waters of this region are known for their clarity and beauty and the area attracts many humpback whales between June and November. A popular destination in Neiafu is the 'Ene'io Botanical Garden a bird sanctuary that promotes the survival of exotic and native bird species as well as supports and conserves a diverse array of plant life.

Day at sea  
So., 18. Mai  
Ankunft 00:00

Tag 13

Days at sea are the perfect opportunity to relax unwind and catch up with what you've been meaning to do. So whether that is going to the gym, visiting the spa, whale watching, catching up on your reading or simply topping up your tan these blue sea days are the perfect balance to busy days spent exploring shore side.

#### Leleuvia Island

Mo., 19. Mai

Ankunft 10:00

Tag 14

Leleuvia is a small low-lying island southeast of Ovalau with a length of barely 500 meters. Situated between the chiefly island of Bau, Moturiki and Ovalau, almost equidistant from Ovalau and the Central Eastern coast of Viti Levu, this lush, green island hosts a small resort. An easily accessible reef with many colorful reef fish 10 meters off of Leleuvia's western beach invites to be explored. Resident sea kraits are often seen resting ashore north of the small pier. Despite its small size and the resort on its southern side, the island still has quite an extensive forest of tamanu (Alexandrian laurel), lantern trees, fish-poison trees and beach gardenia. There are also local clusters of beach hibiscus, beach heliotrope and Pacific rosewood where Sacred Kingfishers, Orange-breasted Honeyeaters, and Pacific Swallows have been recorded.

#### Lautoka

Di., 20. Mai

Ankunft 07:30

Tag 15

It doesn't get much sweeter than arriving on the sun-soaked shores of the Sugar City. Fiji's second-biggest settlement opens up a world of blissful beaches and turquoise seascapes while its dense jungle lures the adventurous deep into its embrace. Experience rich Fijian life and see dramatic displays like warrior dances and remarkable local practices like firewalks which kick up burning embers into the night's sky. Legend says the city took its name after two chiefs faced each other in a duel. A spear pierced one of the chiefs leading to the shout of 'lau-toka!' or 'spear hit!' Sugar is Lautoka's main trade but its botanical gardens are a sweet insight into the tropical plant life that thrives here - from pearl white lilies to tall fragrant orchids. Explore temples charming cafes and mills - or barter for some of the juiciest mangoes you'll ever taste at the city's lively market. You'll only be able to resist the beaches for so long and it doesn't get much more stunning than the Blue Lagoon - a heavenly blend of woven together turquoise shades. Remote wild and unspoiled these are some of the best tropical beaches in the world. There's more rejuvenating relaxation at the mineral-rich mud pools and spas fuelled by the volcanic activity below. Savala Island is a teardrop of sand offshore and another beautiful place to wander with the soft powder between your toes - along sandy spits that peter out into the water. Or swim and snorkel among its envied reefs thronging with fish life.

## Im Preis inbegriffen

- internationale Flüge
- Transfers
- 1 Hotelübernachtung vor der Kreuzfahrt und 1 Tageshotel nach der Kreuzfahrt, falls erforderlich
- Inlandsflüge wenn notwendig
- Geführte Zodiac-, Land- und Seetouren sowie Aktivitäten unter der Leitung des Expeditions-Teams
- Parka



- Fachkundige Lektoren und/oder Kreuzfahrtberater
- Geräumige Suiten
- Persönlicher Butler-Service für alle Suiten
- Unbegrenzt kostenloses WiFi
- Individueller Service – nahezu ein Crewmitglied pro Gast
- Auswahl an Restaurants, abwechslungsreiche Küche, freie Platzwahl
- Getränke in der Suite und auf dem gesamten Schiff – Champagner, auserlesene Weine und hochwertige Spirituosen
- Essen in der Suite und 24-Stunden Zimmerservice
- Gehobene Unterhaltung an Bord
- Sämtliche Trinkgelder an Bord

---

## Nicht im Preis inbegriffen

- Transfers
- Reiseversicherungen
- Visa- oder Passgebühren (falls erforderlich)
- persönliche Ausgaben (Einkäufe, optionale Ausflüge)
- sonstige im Programm nicht genannte Leistungen

## Ihr Schiff

Ihr Schiff ist die "Silver Cloud".  
Ausführlich stellen wir Ihnen  
dieses Schiff auf unseren  
Schiffseiten vor.

[Ausführliche Informationen](#) zu  
diesem Schiff.

