

# Inselparadiese, Strände und Lagunen

Reisetermin

07.02. - 24.02.2026

Reederei

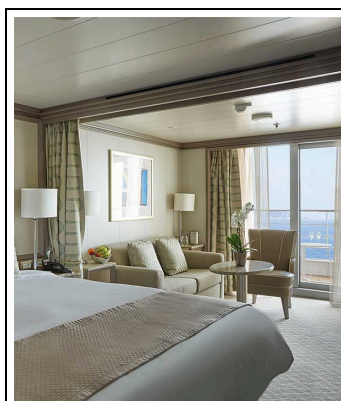
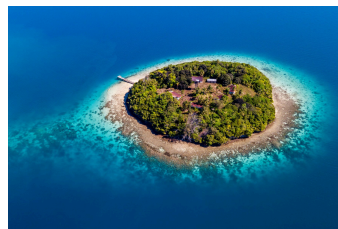
Silversea

Schiff

Silver Dawn

Reisecode

DA260207016



Door-to-DoorDoor-to-Door

**Classic Veranda Suite**

Doppelbelegung



**€ 14.200**  
pro Person

Einzelbelegung



**€ 28.400**  
pro Person



Door-to-DoorDoor-to-Door  
**Superior Veranda Suite**

Doppelbelegung



€ **14.900**  
pro Person

Einzelbelegung



€ **29.800**  
pro Person



Door-to-DoorDoor-to-Door  
**Deluxe Veranda Suite**

Doppelbelegung



€ **15.400**  
pro Person

Einzelbelegung



€ **30.800**  
pro Person



Door-to-DoorDoor-to-Door  
**Panorama Suite**

Doppelbelegung

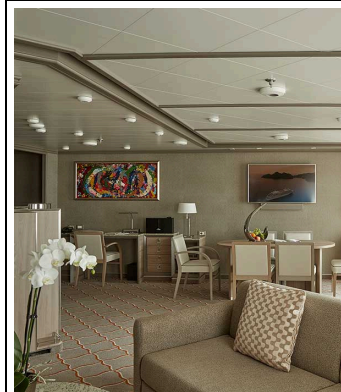


**Nicht  
verfügbar**

Einzelbelegung



**Nicht  
verfügbar**



Door-to-DoorDoor-to-Door  
**Royal Suite**

Doppelbelegung

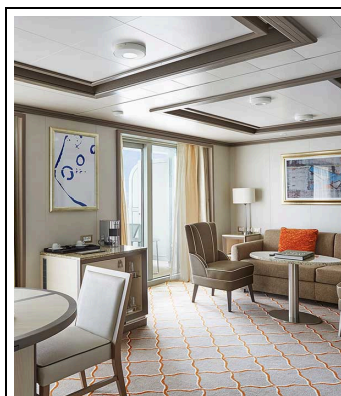


**Nicht  
verfügbar**

Einzelbelegung



**Nicht  
verfügbar**



Door-to-DoorDoor-to-Door

### Silver Suite

Doppelbelegung



Nicht  
verfügbar

Einzelbelegung



Nicht  
verfügbar



Door-to-DoorDoor-to-Door

### Owner's Suite

Doppelbelegung

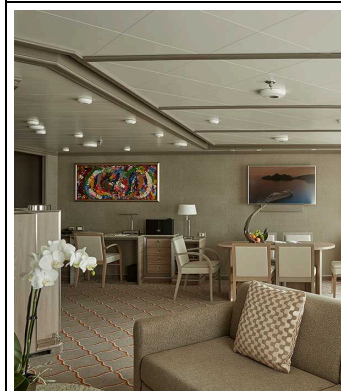


Nicht  
verfügbar

Einzelbelegung



Nicht  
verfügbar



Door-to-DoorDoor-to-Door

### Grand Suite

Doppelbelegung



Nicht  
verfügbar

Einzelbelegung



Nicht  
verfügbar



Door-to-DoorDoor-to-Door

### Vista Suite

Doppelbelegung



Nicht  
verfügbar

Einzelbelegung



Nicht  
verfügbar



Papeete (Tahiti)

Sa., 7. Februar

Ankunft 00:00

Tag 1

Papeete is the center of the tropical paradise of French Polynesia where islands fringed with gorgeous beaches and turquoise ocean await to soothe the soul. This spirited city is the capital of French Polynesia and serves as a superb base for onward exploration of Tahiti – an island of breathtaking landscapes and oceanic vistas. A wonderful lagoon of crisp clear water begs to be snorkelled stunning black beaches and blowholes pay tribute to the island's volcanic heritage and lush green mountains beckon you inland on adventures as you explore extraordinary Tahiti. Visit to relax and settle into the intoxicating rhythm of life in this Polynesian paradise.

Day at sea

So., 8. Februar

Ankunft 00:00

Tag 2

Days at sea are the perfect opportunity to relax unwind and catch up with what you've been meaning to do. So whether that is going to the gym, visiting the spa, whale watching, catching up on your reading or simply topping up your tan these blue sea days are the perfect balance to busy days spent exploring shore side.

Aitutaki

Mo., 9. Februar

Ankunft 10:00

Tag 3

When Lonely Planet co-founder describes somewhere as “the world's most beautiful island” you can be sure that you are in for a treat. Incredible Aitutaki, inspiring Aitutaki, unbelievable, idyllic and unimaginable, there are simply not enough superlatives to describe quite how amazing Aitutaki is. Brought to light in 1779 by Captain Bligh, the Mutiny on the Bounty meant that Aitutaki has something of a bloodthirsty history. While Europeans missionaries eventually settled on the island in the 19th century (evidenced by the white, coral-encrusted walls of the many churches) the island's Polynesian history dates to around 900AD. Traditional songs and dances from this period still exist (although Christian hymns, known as “imene metua” are also popular), and are performed by islanders with gusto and much pride. The island is part of the Cook Islands, one of the most secluded and romantic archipelagos in the world. With its powder white sand, warm turquoise waters and sense of casual luxury, it is easy to see why the island has earned itself the moniker of honeymooner's island. However, there is much more to Aitutaki than just fun in the sun. With a reef that completely encompasses a large turquoise lagoon, Aitutaki is considered one of the most spectacular diving and snorkelling destinations in the world. Added to the tropical excitement is that when entering the main village via Zodiac along a narrow channel – travellers will be greeted by a traditional and customary warrior challenge.

Day at sea  
Di., 10. Februar  
Ankunft 00:00

Tag 4

Days at sea are the perfect opportunity to relax unwind and catch up with what you've been meaning to do. So whether that is going to the gym, visiting the spa, whale watching, catching up on your reading or simply topping up your tan these blue sea days are the perfect balance to busy days spent exploring shore side.

Date Line lose a day  
Mi., 11. Februar  
Ankunft 00:00

Tag 4

For two hours of every day (between 10 am and 12 pm GMT), the world has three different dates. Planet Earth is divided into 24-different time zones, meaning that when it is 11.30 pm in Samoa (GMT-11), it will be 6.30 am in New York City (GMT-4) and 12.30 am in Kiritimati (GMT +14)! So, for those who travel east, time moves faster over the time zones, and you suddenly find yourself one day older! Just to confuse matters even further, the IDL (International Date Line) is arbitrary, and countries can request to move it as they please! However, regardless of where you are on the planet, the time and date always changes at midnight.

Day at sea  
Do., 12. Februar  
Ankunft 00:00

Tag 5

Days at sea are the perfect opportunity to relax unwind and catch up with what you've been meaning to do. So whether that is going to the gym, visiting the spa, whale watching, catching up on your reading or simply topping up your tan these blue sea days are the perfect balance to busy days spent exploring shore side.

Nuku'alofa, Tongatapu  
Fr., 13. Februar  
Ankunft 08:00

Tag 6

As the Kingdom of Tonga's largest island and capital Nuku'alofa is the hub of city life with Tonga's greatest concentration of hotels restaurants and nightlife. It is also the seat of Tonga's government and the island's historic center where you'll find the royal palace the government and business districts as well as churches the colorful Central Market and ancient vestiges of the island's storied past. As Tonga's only deep-water port Nuku'alofa is also its hub for boat rides and excursions to the many outer islands.

Day at sea  
Sa., 14. Februar  
Ankunft 00:00

Tag 7

Days at sea are the perfect opportunity to relax unwind and catch up with what you've been meaning to do. So whether that is going to the gym, visiting the spa, whale watching, catching up on your reading or simply topping up your tan these blue sea days are the perfect balance to busy days spent exploring shore side.

Savusavu (Vanua Levu)  
So., 15. Februar  
Ankunft 08:00

Tag 8

An island paradise of rich colours and verdant scenery Savusavu is a staggeringly beautiful and gloriously undeveloped South Pacific island. Fiji's more tourist-orientated Viti Levu island is close by but the joy of Savusavu comes in venturing off the beaten track and delving into the heart of a tropical idyll where hidden villages welcome you with open arms. Revelling in its nickname as Fiji's hidden paradise the country's second-largest island is a place of adventure - and geothermically fuelled relaxation. Mud baths burble and hot springs simmer across the island adding to the sense that the land itself is alive and breathing. Trek the rainforests with parrots chattering overhead and see the colours splashed across the green landscapes and gardens by orchids and water lilies. Gardens overlook the gorgeous Savusavu Bay and you can walk between hundreds of palm varieties and trees that droop laden with exotic fruits. The sprawling rainforest opens up briefly to reveal Savusavu the island's compact main town. Thriving coral reefs add yet more colour and life to the surrounding seabeds with spectacular snorkelling opportunities and the chance to spot bottlenose and spinner dolphins skipping and skimming acrobatically across the tips of the waves. The fertile environment also encourages black lip pearl oysters to thrive here leading to the development of one of the island's treasured exports beautiful black pearls. Visit the bay's farm to find out more.

Day at sea  
Mo., 16. Februar  
Ankunft 00:00

Tag 9

Days at sea are the perfect opportunity to relax unwind and catch up with what you've been meaning to do. So whether that is going to the gym, visiting the spa, whale watching, catching up on your reading or simply topping up your tan these blue sea days are the perfect balance to busy days spent exploring shore side.

Mystery Island, Anelghowhat  
Di., 17. Februar  
Ankunft 09:00

Tag 10

Inyeug Island better known as Mystery Island is part of the Tafea Province of Vanatu the southernmost collection of islands. This is a picturesque island with large rounded cliffs jutting from the water. The cliffs create protected lagoons with some of the lightest clearest waters in the world. The island is with the exception of an airstrip used twice weekly made up entirely of beaches and reefs. This place is ideal for relaxing swimming and snorkelling in the tranquil waters where many diverse tropical fishes hide between the corals.

Noumea  
Mi., 18. Februar  
Ankunft 12:13

Tag 11

Catch some shade in the city's centre below Coconut Palm Square and absorb the vibrant fusion of French and Kanak cultures. Or take a leisurely open-air stroll along the waterfront where white boats bob and jostle on the lapping waters. Noumea is a perfect jumping-off point for serene island adventures too. Enjoy a voyage to the island paradise of Amedee Isl - a tiny green land with a narrow historic lighthouse rocketing up from its centre. Climb 247 steps for the stunning view of the blotchy blue waters all around. Or explore the waters to swim among turtles and orange clownfish. Set among the New Caledonian barrier reef there are incredible diving opportunities and glass-bottom boats offer you a dry window into the underwater world. Kick back on some of the softest sands imaginable and enjoy glorious sea views from the inviting shade of coconut palms. More island jaunts like Illot Maitre - which translates as the Master Isle – tempt where you'll find idyllic strings of stilted bungalows laced across the crystal-clear shallow waters. Swim in the sparkling sea and sprawl across the white sand beaches that are waiting. Back in the city try soft coconut crab following a starter of New Caledonian prawns. Bougna is the traditional Melanesian meal of choice and a social experience where locals share a mix of vegetables and chicken in coconut milk slow-cooked for hours in a bed of banana leaves.

Noumea  
Do., 19. Februar  
Ankunft 00:00

Tag 12

Catch some shade in the city's centre below Coconut Palm Square and absorb the vibrant fusion of French and Kanak cultures. Or take a leisurely open-air stroll along the waterfront where white boats bob and jostle on the lapping waters. Noumea is a perfect jumping-off point for serene island adventures too. Enjoy a voyage to the island paradise of Amedee Isl - a tiny green land with a narrow historic lighthouse rocketing up from its centre. Climb 247 steps for the stunning view of the blotchy blue waters all around. Or explore the waters to swim among turtles and orange clownfish. Set among the New Caledonian barrier reef there are incredible diving opportunities and glass-bottom boats offer you a dry window into the underwater world. Kick back on some of the softest sands imaginable and enjoy glorious sea views from the inviting shade of coconut palms. More island jaunts like Illot Maitre - which translates as the Master Isle - tempt where you'll find idyllic strings of stilted bungalows laced across the crystal-clear shallow waters. Swim in the sparkling sea and sprawl across the white sand beaches that are waiting. Back in the city try soft coconut crab following a starter of New Caledonian prawns. Bougna is the traditional Melanesian meal of choice and a social experience where locals share a mix of vegetables and chicken in coconut milk slow-cooked for hours in a bed of banana leaves.

Day at sea  
Fr., 20. Februar  
Ankunft 00:00

Tag 13

Days at sea are the perfect opportunity to relax unwind and catch up with what you've been meaning to do. So whether that is going to the gym, visiting the spa, whale watching, catching up on your reading or simply topping up your tan these blue sea days are the perfect balance to busy days spent exploring shore side.

Norfolk Island  
Sa., 21. Februar  
Ankunft 08:00

Tag 14

Marooned between the Queensland coast and New Zealand's North Island, Norfolk Island is a place of perfect isolation. Once a remote penal colony feared for its brutality, it later became the sanctuary of the Bounty mutineers - who made the arduous journey thousands of miles from Pitcairn to start afresh here in 1856. Local guides - often direct descendants of the Bounty mutineers - share the island's history firsthand. A stunning 360-degree painting tells the Bounty's story in immersive detail. The Kingston and Arthur's Vale Historic Area is a living museum, and between 1788 and 1855 the island was home to a notorious and brutal penal colony, first settled by the British in 1788. Earmarked for the worst of the worst, the sheer remoteness of the location was said to render any escape attempt impossible. The same unique setting that made it such a notorious outpost also formed a remarkable island eco-system. Birdwatchers can explore the subtropical rainforest and shores, home to 25 rare and endemic bird species sheltered by fragrant pine trees and lush gardens. Discover the diverse coral lagoon, with glass bottom boat tours revealing gardens of coral and colorful tropical fish. To the south of Emily Bay's clear, tempting waters, the small Philip Island stands stark against the blue, with flashes of bright orange ochre and greenery painting its steep cliffs.

Day at sea  
So., 22. Februar  
Ankunft 00:00

Tag 15

Days at sea are the perfect opportunity to relax unwind and catch up with what you've been meaning to do. So whether that is going to the gym, visiting the spa, whale watching, catching up on your reading or simply topping up your tan these blue sea days are the perfect balance to busy days spent exploring shore side.

Bay of Islands  
Mo., 23. Februar  
Ankunft 08:00

Tag 16

The Tasman Sea on the west and the Pacific Ocean on the east meet at the top of North Island at Cape Reinga. No matter what route you take you'll pass farms and forests marvellous beaches and great open spaces. The East Coast up to the Bay of Islands is Northland's most densely populated often with refugees from bigger cities—looking for a more relaxed life—clustered around breathtaking beaches. The first decision on the drive north comes at the foot of the Brynderwyn Hills. Turning left will take you up the West Coast through areas once covered with forests and now used for either agricultural or horticulture. Driving over "the Brynderwyns " as they are known takes you to Whangarei the only city in Northland. If you're in the mood for a diversion you can slip to the beautiful coastline and take in Waipu Cove an area settled by Scots and Laings Beach where million-dollar homes sit next to small Kiwi beach houses. An hour's drive farther north is the Bay of Islands known all over the world for its beauty. There you will find lush forests splendid beaches and shimmering harbors. The Treaty of Waitangi was signed here in 1840 between Māori and the British Crown establishing the basis for the modern New Zealand state. Continuing north on the East Coast the agricultural backbone of the region is even more evident and a series of winding loop roads off the main highway will take you to beaches that are both beautiful and isolated where you can swim dive picnic or just laze.

Auckland  
Di., 24. Februar  
Ankunft 07:00

Tag 17

Known as the 'City of Sails', its two harbours will tempt you with waterfront walks and the chance to breathe fresh sea air deep into your lungs while absorbing spectacular views of Auckland's grand harbour bridge's span. Take in the true scale of Auckland's magnificent cityscape by ascending 192 metres to the Sky Tower and looking out over the city's gleaming silver towers which reflect on the abundant waters below. Views over the bay and adjacent islands await and you can share elegant cocktails at this dizzying height above the mingling yachts of Viaduct Harbour. Immerse yourself in the rich history and culture of the area at Auckland Art Gallery Toi o Tāmaki. Set beside tranquil fountains and handsomely landscaped flowerbeds of Albert Park, the French-Renaissance building houses, New Zealand's most extensive art collection and exhibits works from Māori and Pacific artists. New Zealand is world-renowned for its captivating natural scenery and day trips across the sparkling bays to nearby islands like Waiheke Tiritiri Matangi and Rangitoto are always tempting. Discover lava caves grape-laden vineyards and flourishing wildlife in the Hauraki Gulf's islands. You'll also find an exceptional 360-degree panorama over the city to the horizon beyond from the heights of ancient Mount Eden. The spectacular dormant volcano rises improbably from a city suburb and also lends its name to Eden Park – the unusual translucent stadium of New Zealand's mighty All Blacks.

## Im Preis inbegriffen

- internationale Flüge
- Transfers
- 1 Hotelübernachtung vor der Kreuzfahrt und 1 Tageshotel nach der Kreuzfahrt, falls erforderlich
- Inlandsflüge wenn notwendig
- Geführte Zodiac-, Land- und Seetouren sowie Aktivitäten unter der Leitung des Expeditions-Teams
- Parka
- Fachkundige Lektoren und/oder Kreuzfahrtberater
- Geräumige Suiten
- Persönlicher Butler-Service für alle Suiten
- Unbegrenzt kostenloses WiFi
- Individueller Service – nahezu ein Crewmitglied pro Gast
- Auswahl an Restaurants, abwechslungsreiche Küche, freie Platzwahl
- Getränke in der Suite und auf dem gesamten Schiff – Champagner, auserlesene Weine und hochwertige Spirituosen
- Essen in der Suite und 24-Stunden Zimmerservice
- Gehobene Unterhaltung an Bord

- Sämtliche Trinkgelder an Bord

---

## Nicht im Preis inbegriffen

- Transfers
- Reiseversicherungen
- Visa- oder Passgebühren (falls erforderlich)
- persönliche Ausgaben (Einkäufe, optionale Ausflüge)
- sonstige im Programm nicht genannte Leistungen

## Ihr Schiff

Ihr Schiff ist die "Silver Dawn".  
Ausführlich stellen wir Ihnen  
dieses Schiff auf unseren  
Schiffseiten vor.

[Ausführliche Informationen](#) zu  
diesem Schiff.

